



MODEL 03002-5
CAMPBELL SCIENTIFIC

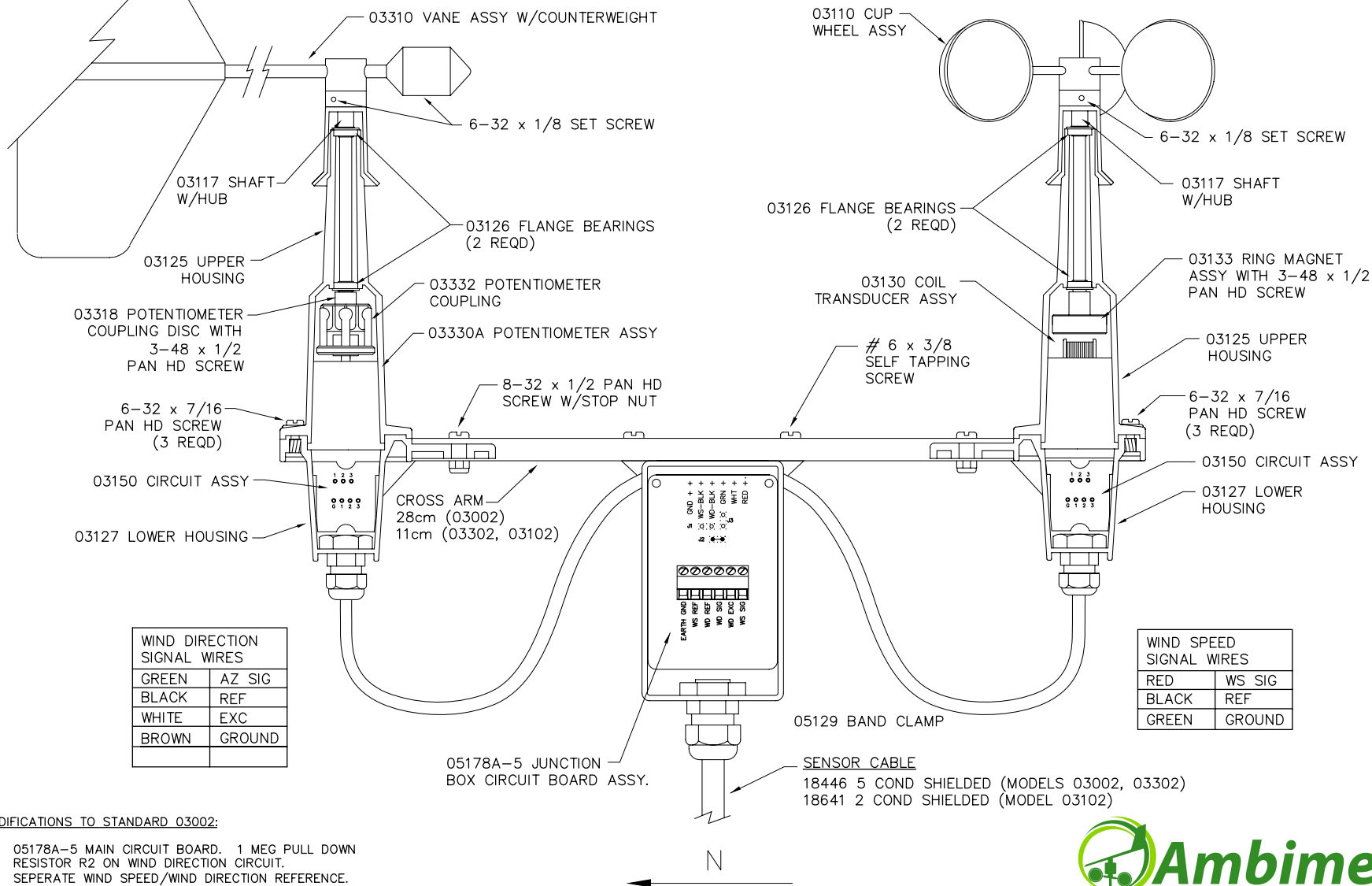
GENERAL ASSEMBLY & REPLACEMENT PARTS

WIND SENTRY VANE

MODEL 03302

WIND SENTRY ANEMOMETER

MODEL 03102



MODIFICATIONS TO STANDARD 03002:

- 05178A-5 MAIN CIRCUIT BOARD. 1 MEG PULL DOWN RESISTOR R2 ON WIND DIRECTION CIRCUIT. SEPERATE WIND SPEED/WIND DIRECTION REFERENCE.
- 03126 BEARINGS FOR VANE AND ANEMOMETER

