



KIWI QUALITY METER

- Accurately measure dry matter & Brix.
- Ascertain harvest and incoming fruit quality instantly.
- Easy, out-of-the-box operation.

The F-751 Kiwi Quality Meter accurately and non-destructively measures dry matter and Brix, the kiwi's key quality and ripeness metrics. Using near infrared (NIR) technology, the F-751 takes measurements in seconds, enabling kiwi growers, distributors and retailers to rapidly gather data without destroying product.

Trusted by thousands of universities, research institutes and commercial producers worldwide, Felix Instruments now brings the power of NIR technology to the kiwi industry.

FRUITMAPS

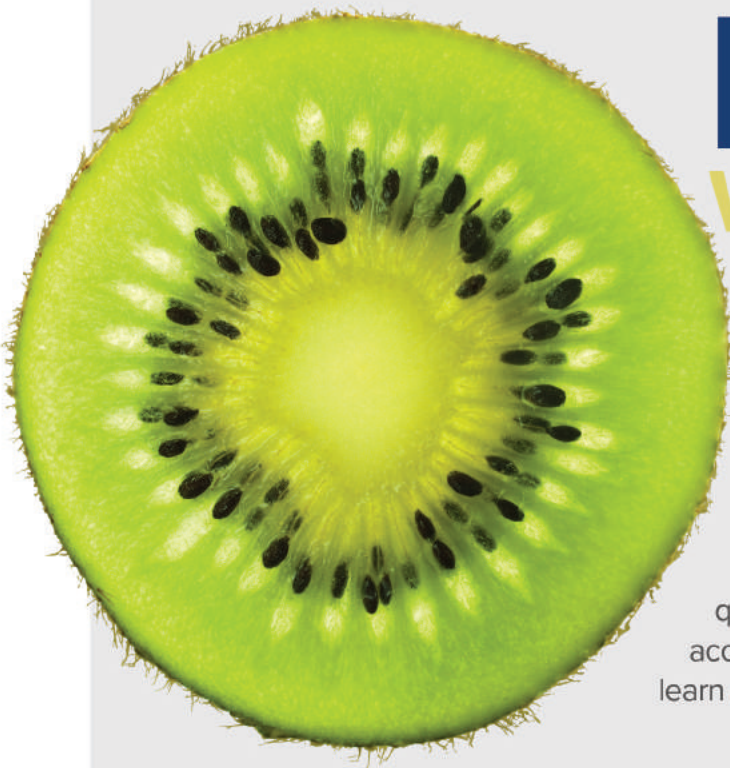


FOR NEWS AND UPDATES VISIT
WWW.FELIXINSTRUMENTS.COM



SPECIFICATIONS

Spectrometer	Hamamatsu C11708MA	PC Interface	Wi-Fi
Range	640-1050 nm	Data Recorded	Raw data, reflectance, absorbance, 1 st derivative, 2 nd derivative, GPS, date, time
Spectral Sample Size	2.3 nm	Measurement	Dry matter & Brix
Spectral Resolution	20 nm (FWHM) maximum	Power Source	Removable 3400 milliamp hour lithium-ion batteries
Light Source	Halogen Tungsten Lamp	Battery Life	500+ measurements
Lens	Fused silica coated to enhance NIR	Body	Heavy-duty aluminum body
Shutter	White painted reference standard	Dimensions	7.1" x 4.75"W, 1.75" thick
Display	Sunlight visible LCD screen w/ backlight	Weight	1.05 kg



THE POWER TO PREDICT WITH FRUITMAPS®

Paired with the free application, Fruitmaps®, the F-751 Kiwi Quality Meter is a game-changer for the kiwi industry. Using a wi-fi connection, gathered data can be seamlessly uploaded to the cloud giving kiwi growers the power to visualize their entire crop's maturity and forecast harvest timing more accurately than ever before. In addition, the device gives QA professionals the ability to assess kiwi quality while in storage, and, retail outlets the capacity to accurately inspect incoming product. Visit our website to learn more at www.felixinstruments.com.

FRUITMAPS 



www.felixinstruments.com



sales@felixinstruments.com



(360) 833-8835

